

**SUPPLEMENTARY APPENDIX: “ORDER, DISTANCE, AND LOCAL
DEVELOPMENT OVER THE LONG-RUN ”**

Date: March 1, 2017.

CONTENTS

1. Control Variables One-At-A-Time	2
2. Control for Modern City Presence	3
3. Different Discount Rates	5
4. Non-Linear Effect, Euratlas Sample	9
5. Jackknife, Euratlas Sample	11
6. Spatial Autocorrelation, Euratlas Sample	12
7. Global Data, State Antiquity Measure	13
8. Global Data, City > 100,000 Control	14
9. Global Data, No Border Regions	15
10. Global Data, Non-Linear Effect	16
11. Global Data, Different Discount Rates	17
12. Global Data, Jackknife	21
13. Global Data, Spatial Autocorrelation	22
14. Global Data without Euratlas Sample	23

1. CONTROL VARIABLES ONE-AT-A-TIME

TABLE 1. Historical Capitals and Development

	(1)	(2)	(3)	(4)	(5)	(6)	(7)	(8)	(9)	(10)	(11)	(12)	(13)
	log(Lights)	log(Lights)	log(Lights)	log(Lights)	log(Lights)	log(Lights)	log(Lights)	log(Lights)	log(Lights)	log(Lights)	log(Lights)	log(Lights)	log(Lights)
LHCE $\delta=5\%$	5.596*** (0.910)	4.922*** (0.769)	2.400*** (0.655)	5.495*** (0.934)	4.594*** (0.854)	4.885*** (0.952)	5.594*** (0.911)	5.178*** (0.803)	5.528*** (0.883)	5.552*** (0.904)	5.580*** (0.915)	5.442*** (0.896)	5.499*** (0.882)
Current Capital Distance		-0.512*** (0.100)											
log(Population)			0.287*** (0.0410)										
Absolute Latitude				0.0126 (0.0112)									
Avg Precipitation					1.773*** (0.421)								
Avg Precipitation Squared					-1.024*** (0.273)								
Avg Temperature						0.0221* (0.00888)							
% Mountainous							-0.0436 (0.0943)						
Access to Water								0.570*** (0.0856)					
Malaria Index									0.184 (0.131)				
Oil and Gas										0.271*** (0.0654)			
Soil Quality											-0.0280 (0.0399)		
Distance to Nearest Historical City												-0.353 (0.224)	
Conflict													1.837 (1.496)
Constant	0.864*** (0.0324)	1.129*** (0.0523)	-2.006*** (0.410)	0.350 (0.449)	0.412** (0.133)	0.610*** (0.114)	0.872*** (0.0340)	0.482*** (0.0682)	0.860*** (0.0322)	0.856*** (0.0330)	1.019*** (0.234)	0.992*** (0.0926)	0.833*** (0.0410)
Country FE	✓	✓	✓	✓	✓	✓	✓	✓	✓	✓	✓	✓	✓
Observations	7300	7300	7300	7300	6591	6591	7300	7300	7300	7300	7300	7300	7300
Adjusted R^2	0.090	0.126	0.481	0.093	0.102	0.086	0.090	0.152	0.099	0.095	0.091	0.102	0.094
F	37.81	30.63	107.4	22.89	12.98	21.63	19.04	39.60	19.94	21.54	23.12	24.88	20.62

Clustered standard errors in parentheses

+ $p < 0.10$, * $p < 0.05$, ** $p < 0.01$, *** $p < 0.001$

2. CONTROL FOR MODERN CITY PRESENCE

TABLE 2. LHCE and Development, City with > 50,000

	(1)	(2)	(3)	(4)	(5)
	log(Lights)	log(Lights)	log(Lights)	log(Lights)	log(Lights)
LHCE $\delta=5\%$	5.596*** (0.910)	2.037*** (0.572)	2.023*** (0.354)	2.021*** (0.319)	1.625*** (0.430)
Current Capital Distance		0.0301 (0.110)	0.0116 (0.0976)	-0.0134 (0.0636)	0.0521 (0.0994)
log(Population)		0.265*** (0.0664)	0.269*** (0.0207)	0.272*** (0.0215)	0.267*** (0.0382)
Absolute Latitude		0.0167 (0.0133)	- -	- -	0.0121 (0.0126)
Avg Precipitation		0.0162 (0.348)	-0.0109 (0.208)	0.513* (0.260)	0.0982 (0.327)
Avg Precipitation Squared		-0.0702 (0.181)	-0.0992 (0.101)	-0.349* (0.148)	-0.155 (0.163)
Avg Temperature		0.0288*** (0.00504)	0.0340*** (0.00464)	0.0300*** (0.00589)	0.0336*** (0.00635)
% Mountainous		-0.148+ (0.0818)	-0.0927+ (0.0478)	-0.0498 (0.0470)	-0.142* (0.0625)
Access to Water		0.270** (0.0843)	0.260*** (0.0297)	0.274*** (0.0333)	0.227*** (0.0475)
Malaria Index		0.0301 (0.0448)	0.0348 (0.0227)	0.0481+ (0.0270)	0.0208 (0.0238)
Oil and Gas		0.0821+ (0.0429)	0.101** (0.0339)	0.110** (0.0382)	0.0791* (0.0347)
Soil Quality		-0.00928 (0.0248)	0.0110 (0.0150)	0.000155 (0.0131)	-0.00529 (0.0153)
Distance to Nearest City		-0.000339 (0.000371)	-0.000843*** (0.000127)	-0.000355** (0.000125)	-0.000674** (0.000241)
Conflict		-0.609 (1.018)	-0.227 (0.553)	-0.761 (0.492)	-0.941 (0.654)
Constant	0.864*** (0.0324)	-2.871** (0.951)	-2.310*** (0.230)	-2.469*** (0.246)	-2.714*** (0.730)
Country FE	✓	✓	-	-	-
Sub-National FE I	-	-	✓	-	-
Sub-National FE II	-	-	-	✓	-
Sub-National FE III	-	-	-	-	✓
Observations	7300	6591	6591	6591	6591
Adjusted R^2	0.090	0.472	0.441	0.427	0.441
F	37.81	108.0	81.69	56.61	57.24

Clustered standard in parentheses

+ $p < 0.10$, * $p < 0.05$, ** $p < 0.01$, *** $p < 0.001$

TABLE 3. LHCE and Development, City with > 100,000

	(1)	(2)	(3)	(4)	(5)
	log(Lights)	log(Lights)	log(Lights)	log(Lights)	log(Lights)
LHCE $\delta=5\%$	5.596*** (0.910)	2.030*** (0.568)	1.998*** (0.349)	1.999*** (0.317)	1.616*** (0.430)
Current Capital Distance		0.0449 (0.101)	0.0410 (0.0984)	0.0120 (0.0622)	0.0671 (0.1000)
log(Population)		0.264*** (0.0657)	0.269*** (0.0202)	0.271*** (0.0210)	0.268*** (0.0381)
Absolute Latitude		0.0161 (0.0136)	- -	- -	0.0119 (0.0126)
Avg Precipitation		0.00721 (0.348)	-0.0522 (0.205)	0.486+ (0.260)	0.0645 (0.323)
Avg Precipitation Squared		-0.0673 (0.182)	-0.0785 (0.0993)	-0.337* (0.148)	-0.140 (0.162)
Avg Temperature		0.0283*** (0.00476)	0.0325*** (0.00458)	0.0290*** (0.00577)	0.0332*** (0.00623)
% Mountainous		-0.149+ (0.0814)	-0.0894+ (0.0464)	-0.0494 (0.0460)	-0.139* (0.0625)
Access to Water		0.267** (0.0828)	0.255*** (0.0291)	0.268*** (0.0329)	0.224*** (0.0473)
Malaria Index		0.0284 (0.0434)	0.0325 (0.0219)	0.0454+ (0.0261)	0.0205 (0.0234)
Oil and Gas		0.0803+ (0.0423)	0.100** (0.0336)	0.106** (0.0379)	0.0782* (0.0344)
Soil Quality		-0.00818 (0.0258)	0.0147 (0.0155)	0.00295 (0.0133)	-0.00187 (0.0158)
Distance to Nearest City, 100k		-0.380 (0.358)	-0.860*** (0.122)	-0.490*** (0.118)	-0.642** (0.225)
Conflict		-0.653 (0.987)	-0.258 (0.554)	-0.799 (0.493)	-0.921 (0.630)
Constant	0.864*** (0.0324)	-2.825** (0.965)	-2.279*** (0.227)	-2.429*** (0.242)	-2.708*** (0.727)
Country FE	✓	✓	-	-	-
Sub-National FE I	-	-	✓	-	-
Sub-National FE II	-	-	-	✓	-
Sub-National FE III	-	-	-	-	✓
Observations	7300	6591	6591	6591	6591
Adjusted R^2	0.090	0.473	0.443	0.430	0.441
F	37.81	115.5	86.07	58.74	57.26

Clustered standard in parentheses

+ $p < 0.10$, * $p < 0.05$, ** $p < 0.01$, *** $p < 0.001$

3. DIFFERENT DISCOUNT RATES

TABLE 4. LHCE and Development, 0% Discount Rate

	(1)	(2)	(3)	(4)	(5)
	log(Lights)	log(Lights)	log(Lights)	log(Lights)	log(Lights)
LHCE $\delta=0\%$	3.800*** (0.611)	1.350*** (0.371)	1.287*** (0.233)	1.278*** (0.221)	1.065*** (0.296)
Current Capital Distance		0.0350 (0.140)	-0.157 (0.102)	-0.0374 (0.0650)	0.0328 (0.102)
log(Population)		0.279*** (0.0766)	0.269*** (0.0214)	0.271*** (0.0216)	0.274*** (0.0400)
Absolute Latitude		0.0142 (0.0112)	- -	- -	0.0208+ (0.0125)
Avg Precipitation		0.0425 (0.371)	-0.0304 (0.206)	0.431+ (0.259)	0.104 (0.331)
Avg Precipitation Squared		-0.0831 (0.187)	-0.0839 (0.0984)	-0.307* (0.146)	-0.155 (0.163)
Avg Temperature		0.0278*** (0.00571)	0.0342*** (0.00463)	0.0286*** (0.00593)	0.0328*** (0.00638)
% Mountainous		-0.126 (0.0786)	-0.110* (0.0461)	-0.0697 (0.0455)	-0.134* (0.0641)
Access to Water		0.295*** (0.0758)	0.272*** (0.0309)	0.276*** (0.0342)	0.230*** (0.0474)
Malaria Index		0.0325 (0.0437)	0.0338 (0.0236)	0.0474+ (0.0275)	0.0256 (0.0246)
Oil and Gas		0.0932* (0.0458)	0.120*** (0.0343)	0.124** (0.0383)	0.0903* (0.0358)
Soil Quality		-0.000852 (0.0202)	0.00177 (0.0142)	-0.00370 (0.0128)	-0.00390 (0.0151)
Distance to Nearest Historical City		0.198 (0.198)	-0.436** (0.154)	-0.310* (0.130)	-0.0635 (0.188)
Conflict		-0.321 (1.014)	0.130 (0.582)	-0.701 (0.494)	-0.792 (0.692)
Constant	0.860*** (0.0326)	-3.122*** (0.853)	-2.175*** (0.264)	-2.329*** (0.270)	-3.230*** (0.684)
Country FE	✓	✓	-	-	-
Sub-National FE I	-	-	✓	-	-
Sub-National FE II		-	-	✓	-
Sub-National FE III		-	-	-	✓
Observations	7300	6591	6591	6591	6591
Adjusted R^2	0.089	0.471	0.432	0.426	0.434
F	38.68	119.4	87.70	63.18	53.66

Clustered standard in parentheses

+ $p < 0.10$, * $p < 0.05$, ** $p < 0.01$, *** $p < 0.001$

TABLE 5. LHCE and Development, 1% Discount Rate

	(1)	(2)	(3)	(4)	(5)
	log(Lights)	log(Lights)	log(Lights)	log(Lights)	log(Lights)
LHCE $\delta=1\%$	4.128*** (0.664)	1.478*** (0.407)	1.408*** (0.252)	1.413*** (0.239)	1.169*** (0.322)
Current Capital Distance		0.0364 (0.139)	-0.155 (0.102)	-0.0368 (0.0649)	0.0331 (0.102)
log(Population)		0.279*** (0.0766)	0.269*** (0.0214)	0.270*** (0.0216)	0.274*** (0.0400)
Absolute Latitude		0.0142 (0.0111)	- -	- -	0.0209+ (0.0125)
Avg Precipitation		0.0434 (0.371)	-0.0289 (0.206)	0.431+ (0.259)	0.103 (0.331)
Avg Precipitation Squared		-0.0837 (0.187)	-0.0846 (0.0984)	-0.307* (0.146)	-0.155 (0.163)
Avg Temperature		0.0279*** (0.00572)	0.0342*** (0.00463)	0.0286*** (0.00592)	0.0328*** (0.00638)
% Mountainous		-0.126 (0.0786)	-0.110* (0.0461)	-0.0695 (0.0455)	-0.133* (0.0641)
Access to Water		0.295*** (0.0758)	0.272*** (0.0309)	0.276*** (0.0342)	0.231*** (0.0474)
Malaria Index		0.0326 (0.0438)	0.0340 (0.0236)	0.0475+ (0.0276)	0.0257 (0.0246)
Oil and Gas		0.0932* (0.0457)	0.120*** (0.0343)	0.123** (0.0383)	0.0902* (0.0358)
Soil Quality		-0.000774 (0.0202)	0.00179 (0.0142)	-0.00356 (0.0128)	-0.00383 (0.0151)
Distance to Nearest Historical City		0.197 (0.198)	-0.436** (0.154)	-0.311* (0.130)	-0.0649 (0.188)
Conflict		-0.315 (1.014)	0.137 (0.582)	-0.695 (0.494)	-0.788 (0.691)
Constant	0.860*** (0.0326)	-3.124*** (0.853)	-2.175*** (0.264)	-2.328*** (0.270)	-3.230*** (0.684)
Country FE	✓	✓	-	-	-
Sub-National FE I	-	-	✓	-	-
Sub-National FE II		-	-	✓	-
Sub-National FE III		-	-	-	✓
Observations	7300	6591	6591	6591	6591
Adjusted R^2	0.089	0.471	0.433	0.426	0.434
F	38.70	119.6	87.73	63.83	53.79

Clustered standard in parentheses

+ $p < 0.10$, * $p < 0.05$, ** $p < 0.01$, *** $p < 0.001$

TABLE 6. LHCE and Development, 10% Discount Rate

	(1)	(2)	(3)	(4)	(5)
	log(Lights)	log(Lights)	log(Lights)	log(Lights)	log(Lights)
LHCE $\delta=10\%$	7.757*** (1.303)	2.947*** (0.827)	2.772*** (0.500)	3.010*** (0.457)	2.376*** (0.635)
Current Capital Distance		0.0492 (0.137)	-0.136 (0.102)	-0.0331 (0.0646)	0.0350 (0.103)
log(Population)		0.279*** (0.0763)	0.268*** (0.0213)	0.268*** (0.0215)	0.273*** (0.0399)
Absolute Latitude		0.0147 (0.0110)	- -	- -	0.0215 ⁺ (0.0126)
Avg Precipitation		0.0532 (0.371)	-0.0189 (0.206)	0.427 ⁺ (0.258)	0.0972 (0.327)
Avg Precipitation Squared		-0.0903 (0.188)	-0.0905 (0.0984)	-0.308* (0.145)	-0.155 (0.162)
Avg Temperature		0.0284*** (0.00581)	0.0346*** (0.00462)	0.0290*** (0.00586)	0.0332*** (0.00639)
% Mountainous		-0.122 (0.0793)	-0.111* (0.0460)	-0.0681 (0.0453)	-0.130* (0.0642)
Access to Water		0.298*** (0.0763)	0.275*** (0.0309)	0.279*** (0.0342)	0.232*** (0.0474)
Malaria Index		0.0343 (0.0445)	0.0355 (0.0239)	0.0488 ⁺ (0.0278)	0.0265 (0.0247)
Oil and Gas		0.0932* (0.0457)	0.120*** (0.0342)	0.123** (0.0382)	0.0893* (0.0359)
Soil Quality		-0.000562 (0.0200)	0.00160 (0.0141)	-0.00260 (0.0127)	-0.00350 (0.0151)
Distance to Nearest Historical City		0.194 (0.198)	-0.442** (0.155)	-0.320* (0.129)	-0.0777 (0.188)
Conflict		-0.248 (1.025)	0.221 (0.582)	-0.626 (0.494)	-0.753 (0.686)
Constant	0.873*** (0.0320)	-3.155*** (0.846)	-2.181*** (0.263)	-2.321*** (0.268)	-3.252*** (0.683)
Country FE	✓	✓	-	-	-
Sub-National FE I	-	-	✓	-	-
Sub-National FE II		-	-	✓	-
Sub-National FE III		-	-	-	✓
Observations	7300	6591	6591	6591	6591
Adjusted R^2	0.089	0.473	0.434	0.429	0.435
F	35.42	122.6	86.79	68.42	54.40

Clustered standard in parentheses

⁺ $p < 0.10$, * $p < 0.05$, ** $p < 0.01$, *** $p < 0.001$

TABLE 7. LHCE and Development, 50% Discount Rate

	(1)	(2)	(3)	(4)	(5)
	log(Lights)	log(Lights)	log(Lights)	log(Lights)	log(Lights)
LHCE $\delta=50\%$	43.53*** (6.603)	18.76*** (4.808)	16.84*** (2.948)	19.81*** (3.235)	16.61*** (3.756)
Current Capital Distance		0.0822 (0.136)	-0.104 (0.100)	-0.0276 (0.0643)	0.0447 (0.103)
log(Population)		0.281*** (0.0757)	0.269*** (0.0214)	0.269*** (0.0215)	0.274*** (0.0394)
Absolute Latitude		0.0169 (0.0104)	- -	- -	0.0243+ (0.0125)
Avg Precipitation		0.0915 (0.372)	-0.00556 (0.205)	0.431+ (0.258)	0.109 (0.321)
Avg Precipitation Squared		-0.112 (0.192)	-0.106 (0.0989)	-0.316* (0.146)	-0.162 (0.161)
Avg Temperature		0.0299*** (0.00614)	0.0361*** (0.00462)	0.0311*** (0.00573)	0.0348*** (0.00632)
% Mountainous		-0.113 (0.0817)	-0.107* (0.0460)	-0.0653 (0.0452)	-0.126+ (0.0641)
Access to Water		0.305*** (0.0782)	0.280*** (0.0313)	0.287*** (0.0345)	0.236*** (0.0476)
Malaria Index		0.0376 (0.0469)	0.0391 (0.0250)	0.0534+ (0.0294)	0.0284 (0.0257)
Oil and Gas		0.0951* (0.0466)	0.121*** (0.0344)	0.122** (0.0383)	0.0886* (0.0365)
Soil Quality		-0.00229 (0.0194)	-0.000139 (0.0142)	-0.00325 (0.0128)	-0.00358 (0.0151)
Distance to Nearest Historical City		0.187 (0.196)	-0.449** (0.156)	-0.342** (0.128)	-0.105 (0.186)
Conflict		-0.0251 (1.080)	0.514 (0.594)	-0.418 (0.504)	-0.656 (0.687)
Constant	0.938*** (0.0190)	-3.304*** (0.826)	-2.215*** (0.264)	-2.344*** (0.269)	-3.389*** (0.672)
Country FE	✓	✓	-	-	-
Sub-National FE I	-	-	✓	-	-
Sub-National FE II		-	-	✓	-
Sub-National FE III		-	-	-	✓
Observations	7300	6591	6591	6591	6591
Adjusted R^2	0.065	0.473	0.432	0.430	0.437
F	43.45	115.7	82.66	67.15	53.90

Clustered standard in parentheses

+ $p < 0.10$, * $p < 0.05$, ** $p < 0.01$, *** $p < 0.001$

4. NON-LINEAR EFFECT, EURATLAS SAMPLE

TABLE 8. LHCE and Development, Non-Linear

	(1)	(2)	(3)	(4)	(5)	(6)	(7)	(8)	(9)	(10)
	log(Lights)	log(Lights)	log(Lights)	log(Lights)	log(Lights)	log(Lights)	log(Lights)	log(Lights)	log(Lights)	log(Lights)
LHCE $\delta=5\%$	9.912*** (1.218)	3.981*** (0.952)	4.172*** (0.450)	3.915*** (0.477)	3.399*** (0.675)					
LHCE $\delta=5\%$ Squared	-10.06*** (1.853)	-4.075*** (1.075)	-4.340*** (0.676)	-3.897*** (0.825)	-3.608*** (0.816)					
log(LHCE $\delta=5\%$)						0.282*** (0.0340)	0.111* (0.0448)	0.150*** (0.0214)	0.140*** (0.0186)	0.0916** (0.0284)
Current Capital Distance		0.0626 (0.134)	-0.104 (0.100)	-0.0164 (0.0642)	0.0501 (0.103)		0.120 (0.133)	-0.0530 (0.0972)	0.0420 (0.0638)	0.0668 (0.104)
log(Population)		0.276*** (0.0759)	0.265*** (0.0210)	0.267*** (0.0213)	0.270*** (0.0397)		0.284*** (0.0751)	0.277*** (0.0205)	0.276*** (0.0207)	0.277*** (0.0397)
Absolute Latitude		0.0134 (0.0109)	- -	- -	0.0195 (0.0125)		0.00751 (0.0106)	- -	- -	0.0148 (0.0125)
Avg Precipitation		0.0431 (0.368)	-0.00515 (0.209)	0.433+ (0.259)	0.112 (0.326)		0.0326 (0.359)	0.0265 (0.214)	0.436+ (0.259)	0.0693 (0.331)
Avg Precipitation Squared		-0.0799 (0.184)	-0.0894 (0.100)	-0.306* (0.145)	-0.157 (0.162)		-0.0873 (0.184)	-0.118 (0.103)	-0.309* (0.146)	-0.142 (0.165)
Avg Temperature		0.0282*** (0.00575)	0.0342*** (0.00465)	0.0288*** (0.00594)	0.0335*** (0.00631)		0.0270*** (0.00523)	0.0325*** (0.00457)	0.0284*** (0.00584)	0.0329*** (0.00634)
% Mountainous		-0.124 (0.0775)	-0.110* (0.0456)	-0.0715 (0.0453)	-0.132* (0.0637)		-0.145* (0.0712)	-0.108* (0.0466)	-0.0900+ (0.0458)	-0.145* (0.0642)
Access to Water		0.288*** (0.0726)	0.264*** (0.0301)	0.267*** (0.0338)	0.226*** (0.0466)		0.280*** (0.0713)	0.247*** (0.0291)	0.243*** (0.0328)	0.224*** (0.0472)
Malaria Index		0.0307 (0.0426)	0.0317 (0.0232)	0.0446+ (0.0270)	0.0251 (0.0246)		0.0229 (0.0421)	0.0198 (0.0228)	0.0321 (0.0264)	0.0239 (0.0242)
Oil and Gas		0.0886+ (0.0444)	0.114*** (0.0337)	0.120** (0.0378)	0.0863* (0.0354)		0.0877* (0.0414)	0.114*** (0.0330)	0.119** (0.0369)	0.0895* (0.0348)
Soil Quality		0.000927 (0.0202)	0.00249 (0.0140)	-0.00244 (0.0127)	-0.00227 (0.0151)		0.000464 (0.0218)	0.00429 (0.0141)	-0.00636 (0.0127)	-0.00613 (0.0154)
Distance to Nearest Historical City		0.212 (0.194)	-0.415** (0.153)	-0.312* (0.128)	-0.0562 (0.187)		0.328* (0.153)	-0.242+ (0.144)	-0.145 (0.124)	0.0396 (0.188)
Conflict		-0.396 (0.989)	-0.0113 (0.572)	-0.758 (0.499)	-0.849 (0.682)		-0.533 (0.934)	-0.270 (0.592)	-0.939+ (0.515)	-0.876 (0.683)
Constant	0.742*** (0.0384)	-3.136*** (0.850)	-2.239*** (0.260)	-2.354*** (0.266)	-3.213*** (0.683)	2.166*** (0.133)	-2.445* (0.949)	-1.700*** (0.273)	-1.815*** (0.272)	-2.620*** (0.727)
Country FE	✓	✓	-	-	-	✓	✓	-	-	-
Sub-National FE I	-	-	✓	-	-	-	-	✓	-	-
Sub-National FE II	-	-	-	✓	-	-	-	-	✓	-
Sub-National FE III	-	-	-	-	✓	-	-	-	-	✓
Observations	7300	6591	6591	6591	6591	7300	6591	6591	6591	6591
Adjusted R^2	0.120	0.478	0.440	0.433	0.439	0.106	0.471	0.441	0.432	0.432
F	37.26	128.2	95.91	75.61	54.88	68.99	107.5	77.19	53.98	53.61

Clustered standard in parentheses

+ $p < 0.10$, * $p < 0.05$, ** $p < 0.01$, *** $p < 0.001$

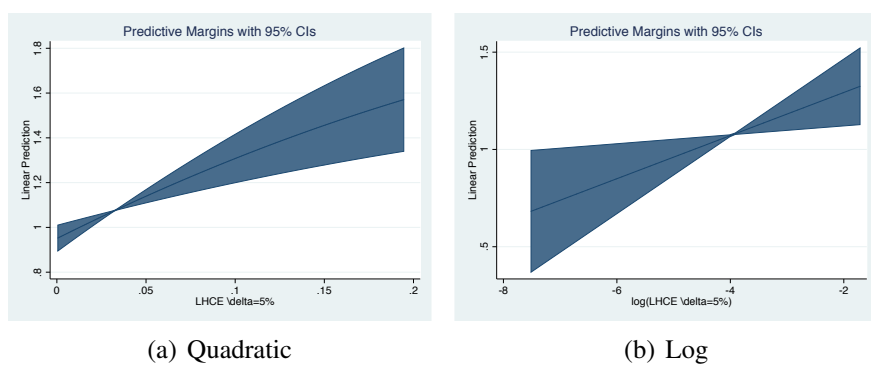


FIGURE 1. Predicted Effect for the Quadratic and Log Specification.

5. JACKKNIFE, EURATLAS SAMPLE

TABLE 9. Historical Capitals and Development, Jackknife

	(1) log(Lights)
LHCE $\delta=5\%$	2.062** (0.753)
Current Capital Distance	0.0420 (0.222)
log(Population)	0.279* (0.119)
Absolute Latitude	0.0144 (0.0243)
Avg Precipitation	0.0475 (0.579)
Avg Precipitation Squared	-0.0864 (0.282)
Avg Temperature	0.0281*** (0.00753)
% Mountainous	-0.124 (0.0902)
Access to Water	0.297*** (0.0818)
Malaria Index	0.0334 (0.0482)
Oil and Gas	0.0931+ (0.0507)
Soil Quality	-0.000576 (0.0275)
Distance to Nearest Historical City	0.196 (0.454)
Conflict	-0.288 (1.460)
Constant	-3.134+ (1.764)
Country FE	✓
Observations	6591
Adjusted R^2	0.472
F	81.75

Clustered standard in parentheses

+ $p < 0.10$, * $p < 0.05$, ** $p < 0.01$, *** $p < 0.001$

6. SPATIAL AUTOCORRELATION, EURATLAS SAMPLE

TABLE 10. Historical Capitals and Development, Spatial Autocorrelation

	(1) log(Lights)
LHCE $\delta=5\%$	3.631*** (0.572)
Current Capital Distance	-0.226*** (0.0571)
log(Population)	0.189*** (0.0174)
Absolute Latitude	-0.0124** (0.00405)
Avg Precipitation	1.271*** (0.241)
Avg Precipitation Squared	-0.458** (0.146)
Avg Temperature	-0.00594 (0.00385)
% Mountainous	-0.459*** (0.0637)
Access to Water	0.362*** (0.0411)
Malaria Index	0.0648 (0.0586)
Oil and Gas	0.143*** (0.0433)
Soil Quality	-0.142*** (0.0222)
Distance to Nearest Historical City	-0.279*** (0.0690)
Conflict	-2.723*** (0.409)
Country FE	✓
Observations	6591
Adjusted R^2	0.838
F	

Clustered standard in parentheses

+ $p < 0.10$, * $p < 0.05$, ** $p < 0.01$, *** $p < 0.001$

7. GLOBAL DATA, STATE ANTIQUITY MEASURE

TABLE 11. Historical Capitals and Development, State Antiquity Measure

	(1)	(2)	(3)	(4)	(5)
	log(Lights)	log(Lights)	log(Lights)	log(Lights)	log(Lights)
Local State Antiquity $\delta=5\%$	0.141*** (0.0326)	0.0527** (0.0159)	0.0420*** (0.0104)	0.0373*** (0.00794)	0.0401*** (0.00961)
Current Capital Distance		-0.0844*** (0.0247)	-0.0137 (0.0176)	0.00888 (0.00813)	0.0384** (0.0122)
log(Population)		0.196*** (0.0217)	0.206*** (0.00494)	0.203*** (0.00471)	0.201*** (0.00815)
Absolute Latitude		-0.00155 (0.00390)	-0.309*** (0.0397)	-0.315*** (0.0406)	0.0167*** (0.00429)
Avg Precipitation		-0.0401 (0.0737)	-0.125*** (0.0214)	-0.108*** (0.0193)	-0.126*** (0.0339)
Avg Precipitation Squared		0.00292 (0.0122)	0.00960* (0.00427)	0.00659+ (0.00393)	0.00936 (0.00760)
Avg Temperature		0.00346 (0.00349)	0.00567*** (0.00130)	0.00616*** (0.00132)	0.00929*** (0.00223)
% Mountainous		-0.237*** (0.0414)	-0.179*** (0.0140)	-0.171*** (0.0141)	-0.191*** (0.0227)
Access to Water		0.0777*** (0.0152)	0.0700*** (0.00513)	0.0783*** (0.00582)	0.0737*** (0.00866)
Malaria Index		-0.0119** (0.00360)	-0.00147 (0.00129)	-0.000374 (0.00111)	-0.00662*** (0.00198)
Oil and Gas		0.122*** (0.0294)	0.0959*** (0.0186)	0.103*** (0.0194)	0.0971*** (0.0197)
Soil Quality		-0.0540** (0.0180)	-0.0146*** (0.00378)	-0.0120** (0.00389)	-0.0252*** (0.00620)
Distance to Nearest City		0.213*** (0.0383)	0.111*** (0.0305)	0.166*** (0.0284)	0.0747 (0.0541)
Conflict		-0.553 (0.398)	-0.440+ (0.225)	-1.311*** (0.151)	-1.090*** (0.224)
Constant	0.369*** (0.0101)	-0.814*** (0.147)	10.87*** (1.537)	11.03*** (1.578)	-1.853*** (0.190)
Country FE	✓	✓	-	-	-
Sub-National FE I	-	-	✓	-	-
Sub-National FE II	-	-	-	✓	-
Sub-National FE III	-	-	-	-	✓
Observations	60331	55025	55025	55025	55025
Adjusted R^2	0.030	0.513	0.356	0.356	0.348
F	18.83	85.52	185.4	189.4	64.19

Clustered standard in parentheses

+ $p < 0.10$, * $p < 0.05$, ** $p < 0.01$, *** $p < 0.001$

8. GLOBAL DATA, CITY > 100,000 CONTROL

TABLE 12. Historical Capitals and Development, Cities >100,000

	(1)	(2)	(3)	(4)	(5)
	log(Lights)	log(Lights)	log(Lights)	log(Lights)	log(Lights)
LHCE $\delta=5\%$	5.756*** (1.014)	2.044*** (0.467)	1.762*** (0.278)	1.654*** (0.231)	1.594*** (0.304)
Current Capital Distance		-0.0820** (0.0257)	-0.00408 (0.0178)	0.0157* (0.00773)	0.0438*** (0.0119)
log(Population)		0.190*** (0.0215)	0.201*** (0.00488)	0.197*** (0.00468)	0.193*** (0.00808)
Absolute Latitude		-0.00162 (0.00377)	-0.329*** (0.0441)	-0.367*** (0.0462)	0.0173*** (0.00422)
Avg Precipitation		-0.0280 (0.0712)	-0.114*** (0.0213)	-0.0879*** (0.0193)	-0.115*** (0.0346)
Avg Precipitation Squared		0.000855 (0.0119)	0.00807+ (0.00423)	0.00391 (0.00394)	0.00862 (0.00769)
Avg Temperature		0.00325 (0.00341)	0.00576*** (0.00128)	0.00653*** (0.00131)	0.00910*** (0.00222)
% Mountainous		-0.230*** (0.0415)	-0.167*** (0.0140)	-0.154*** (0.0142)	-0.187*** (0.0221)
Access to Water		0.0835*** (0.0165)	0.0748*** (0.00523)	0.0842*** (0.00605)	0.0768*** (0.00893)
Malaria Index		-0.0116** (0.00349)	-0.000864 (0.00121)	0.000492 (0.00105)	-0.00616*** (0.00186)
Oil and Gas		0.139*** (0.0300)	0.112*** (0.0187)	0.135*** (0.0201)	0.115*** (0.0203)
Soil Quality		-0.0492** (0.0181)	-0.0109** (0.00382)	-0.00741+ (0.00390)	-0.0216*** (0.00611)
Distance to the Nearest City, 100k		0.192*** (0.0317)	0.0461 (0.0304)	0.105*** (0.0276)	-0.00161 (0.0479)
Conflict		-0.537 (0.395)	-0.480* (0.223)	-1.314*** (0.144)	-1.079*** (0.216)
Constant	0.320*** (0.0157)	-0.848*** (0.141)	11.30*** (1.659)	12.67*** (1.738)	-1.818*** (0.185)
Country FE	✓	✓	-	-	-
Sub-National FE I	-	-	✓	-	-
Sub-National FE II	-	-	-	✓	-
Sub-National FE III	-	-	-	-	✓
Observations	63415	57764	57764	57764	57764
Adjusted R^2	0.064	0.502	0.347	0.344	0.334
F	32.21	63.08	189.2	188.0	62.37

Clustered standard in parentheses

+ $p < 0.10$, * $p < 0.05$, ** $p < 0.01$, *** $p < 0.001$

9. GLOBAL DATA, NO BORDER REGIONS

TABLE 13. Historical Capitals and Development, No Border Regions

	(1)	(2)	(3)	(4)	(5)
	log(Lights)	log(Lights)	log(Lights)	log(Lights)	log(Lights)
LHCE $\delta=5\%$	6.868*** (1.415)	2.377*** (0.664)	2.053*** (0.520)	1.946*** (0.420)	1.978*** (0.426)
Current Capital Distance		-0.0820** (0.0290)	-0.000762 (0.0195)	0.0223+ (0.0117)	0.0300 (0.0216)
log(Population)		0.194*** (0.0270)	0.203*** (0.00554)	0.200*** (0.00524)	0.199*** (0.00865)
Absolute Latitude		-0.000873 (0.00519)	-0.301*** (0.0422)	-0.312*** (0.0426)	0.0186*** (0.00473)
Avg Precipitation		-0.0423 (0.105)	-0.125*** (0.0331)	-0.0828** (0.0292)	-0.121* (0.0525)
Avg Precipitation Squared		0.00529 (0.0207)	0.00698 (0.00863)	-0.00190 (0.00755)	0.00936 (0.0149)
Avg Temperature		0.00318 (0.00481)	0.00576*** (0.00152)	0.00643*** (0.00147)	0.00908*** (0.00249)
% Mountainous		-0.219*** (0.0507)	-0.161*** (0.0171)	-0.162*** (0.0171)	-0.181*** (0.0260)
Access to Water		0.0798*** (0.0174)	0.0731*** (0.00576)	0.0736*** (0.00606)	0.0718*** (0.00859)
Malaria Index		-0.00870* (0.00351)	-0.00276* (0.00138)	0.000190 (0.00129)	-0.00545** (0.00183)
Oil and Gas		0.149*** (0.0405)	0.127*** (0.0224)	0.131*** (0.0236)	0.119*** (0.0241)
Soil Quality		-0.0603** (0.0217)	-0.0166*** (0.00408)	-0.0145*** (0.00395)	-0.0288*** (0.00604)
Distance to Nearest City		0.188*** (0.0487)	0.101** (0.0327)	0.144*** (0.0303)	0.0522 (0.0584)
Conflict		-0.764 (0.647)	-0.619 (0.385)	-1.600*** (0.214)	-1.502*** (0.306)
Constant	0.303*** (0.0186)	-0.773*** (0.192)	10.98*** (1.685)	11.34*** (1.704)	-1.857*** (0.218)
Country FE	✓	✓	-	-	-
Sub-National FE I	-	-	✓	-	-
Sub-National FE II	-	-	-	✓	-
Sub-National FE III	-	-	-	-	✓
Observations	49372	44373	44373	44373	44373
Adjusted R^2	0.070	0.509	0.345	0.343	0.339
F	23.57	99.40	145.9	154.4	55.43

Clustered standard in parentheses

+ $p < 0.10$, * $p < 0.05$, ** $p < 0.01$, *** $p < 0.001$

10. GLOBAL DATA, NON-LINEAR EFFECT

TABLE 14. Historical Capitals and Development, Non-Linear Effect

	(1)	(2)	(3)	(4)	(5)	(6)	(7)	(8)	(9)	(10)
	log(Lights)	log(Lights)	log(Lights)	log(Lights)	log(Lights)	log(Lights)	log(Lights)	log(Lights)	log(Lights)	log(Lights)
LHCE $\delta=5\%$	10.48*** (1.463)	3.459*** (0.829)	3.576*** (0.293)	2.718*** (0.267)	2.706*** (0.401)					
LHCE $\delta=5\%$ Squared	-6.964*** (1.448)	-1.896** (0.599)	-1.980*** (0.270)	-1.422*** (0.217)	-1.434*** (0.271)					
log(LHCE $\delta=5\%$)						0.441*** (0.0681)	0.125*** (0.0313)	0.218*** (0.0186)	0.0466*** (0.00634)	0.0339** (0.0108)
Current Capital Distance		-0.0730** (0.0278)	0.0107 (0.0175)	0.0235** (0.00758)	0.0507*** (0.0122)		-0.0304 (0.0364)	0.102*** (0.0195)	0.0260** (0.00834)	0.0454*** (0.0127)
log(Population)		0.188*** (0.0224)	0.199*** (0.00484)	0.196*** (0.00464)	0.192*** (0.00813)		0.187*** (0.0217)	0.199*** (0.00483)	0.199*** (0.00465)	0.197*** (0.00815)
Absolute Latitude		-0.00134 (0.00384)	-0.308*** (0.0397)	-0.312*** (0.0410)	0.0163*** (0.00421)		-0.00121 (0.00420)	-0.323*** (0.0392)	-0.316*** (0.0413)	0.0166*** (0.00420)
Avg Precipitation		-0.0259 (0.0709)	-0.105*** (0.0212)	-0.0846*** (0.0193)	-0.114** (0.0347)		-0.0390 (0.0723)	-0.0967*** (0.0219)	-0.0785*** (0.0195)	-0.115*** (0.0343)
Avg Precipitation Squared		0.000803 (0.0117)	0.00687+ (0.00415)	0.00360 (0.00395)	0.00874 (0.00771)		0.00375 (0.0120)	0.00562 (0.00417)	0.00241 (0.00401)	0.00820 (0.00765)
Avg Temperature		0.00347 (0.00346)	0.00590*** (0.00127)	0.00658*** (0.00130)	0.00924*** (0.00222)		0.00333 (0.00361)	0.00536*** (0.00128)	0.00632*** (0.00131)	0.00938*** (0.00222)
% Mountainous		-0.230*** (0.0405)	-0.167*** (0.0139)	-0.155*** (0.0141)	-0.186*** (0.0222)		-0.238*** (0.0408)	-0.177*** (0.0140)	-0.158*** (0.0142)	-0.186*** (0.0222)
Access to Water		0.0821*** (0.0162)	0.0744*** (0.00519)	0.0837*** (0.00603)	0.0767*** (0.00891)		0.0820*** (0.0165)	0.0736*** (0.00522)	0.0860*** (0.00611)	0.0779*** (0.00902)
Malaria Index		-0.0114** (0.00364)	-0.000168 (0.00118)	0.000899 (0.00105)	-0.00596** (0.00189)		-0.0103** (0.00383)	0.000843 (0.00121)	0.00132 (0.00110)	-0.00603** (0.00188)
Oil and Gas		0.138*** (0.0299)	0.113*** (0.0187)	0.135*** (0.0201)	0.115*** (0.0204)		0.139*** (0.0294)	0.112*** (0.0187)	0.136*** (0.0201)	0.118*** (0.0202)
Soil Quality		-0.0494** (0.0186)	-0.0106** (0.00380)	-0.00741+ (0.00389)	-0.0212*** (0.00607)		-0.0489** (0.0182)	-0.0108** (0.00381)	-0.00769+ (0.00392)	-0.0221*** (0.00614)
Distance to Nearest City		0.197*** (0.0374)	0.0826** (0.0298)	0.133*** (0.0284)	0.0499 (0.0529)		0.189*** (0.0383)	0.0844** (0.0297)	0.131*** (0.0283)	0.0553 (0.0532)
Conflict		-0.623+ (0.374)	-0.553* (0.222)	-1.347*** (0.145)	-1.140*** (0.220)		-0.569 (0.395)	-0.611** (0.223)	-1.314*** (0.144)	-1.096*** (0.208)
Constant	0.255*** (0.0210)	-0.867*** (0.142)	10.43*** (1.498)	10.53*** (1.550)	-1.836*** (0.184)	2.643*** (0.345)	-0.244 (0.171)	12.00*** (1.485)	10.96*** (1.564)	-1.664*** (0.193)
Country FE	✓	✓	-	-	-	✓	✓	-	-	-
Sub-National FE I	-	-	✓	-	-	-	-	✓	-	-
Sub-National FE II	-	-	-	✓	-	-	-	-	✓	-
Sub-National FE III	-	-	-	-	✓	-	-	-	-	✓
Observations	63415	57764	57764	57764	57764	63415	57764	57764	57764	57764
Adjusted R^2	0.097	0.505	0.351	0.347	0.336	0.212	0.501	0.349	0.340	0.328
F	32.67	77.92	193.5	182.0	67.21	41.99	60.15	200.3	184.3	60.79

Clustered standard in parentheses

+ $p < 0.10$, * $p < 0.05$, ** $p < 0.01$, *** $p < 0.001$

11. GLOBAL DATA, DIFFERENT DISCOUNT RATES

TABLE 15. Historical Capitals and Development, 0% Discount Rate

	(1) log(Lights)	(2) log(Lights)	(3) log(Lights)	(4) log(Lights)	(5) log(Lights)
LHCE $\delta=0\%$	2.679*** (0.594)	0.882*** (0.256)	0.743*** (0.191)	0.723*** (0.152)	0.713*** (0.174)
Current Capital Distance		-0.0808** (0.0255)	-0.0118 (0.0176)	0.0122 (0.00787)	0.0398*** (0.0119)
log(Population)		0.192*** (0.0215)	0.203*** (0.00490)	0.198*** (0.00468)	0.195*** (0.00814)
Absolute Latitude		-0.00109 (0.00381)	-0.307*** (0.0398)	-0.312*** (0.0414)	0.0167*** (0.00423)
Avg Precipitation		-0.0293 (0.0720)	-0.115*** (0.0212)	-0.0871*** (0.0194)	-0.113** (0.0342)
Avg Precipitation Squared		0.00122 (0.0119)	0.00818+ (0.00422)	0.00361 (0.00396)	0.00788 (0.00760)
Avg Temperature		0.00329 (0.00344)	0.00565*** (0.00128)	0.00642*** (0.00130)	0.00909*** (0.00221)
% Mountainous		-0.229*** (0.0403)	-0.168*** (0.0140)	-0.154*** (0.0142)	-0.186*** (0.0221)
Access to Water		0.0836*** (0.0165)	0.0755*** (0.00523)	0.0853*** (0.00607)	0.0775*** (0.00892)
Malaria Index		-0.0116** (0.00349)	-0.00111 (0.00121)	0.000237 (0.00106)	-0.00621*** (0.00185)
Oil and Gas		0.139*** (0.0303)	0.114*** (0.0186)	0.137*** (0.0201)	0.117*** (0.0202)
Soil Quality		-0.0501** (0.0182)	-0.0111** (0.00383)	-0.00763+ (0.00391)	-0.0216*** (0.00611)
Distance to Nearest City		0.206*** (0.0370)	0.0919** (0.0299)	0.133*** (0.0285)	0.0482 (0.0531)
Conflict		-0.530 (0.392)	-0.435+ (0.223)	-1.305*** (0.144)	-1.073*** (0.214)
Constant	0.336*** (0.0162)	-0.871*** (0.139)	10.43*** (1.503)	10.56*** (1.566)	-1.832*** (0.185)
Country FE	✓	✓	-	-	-
Sub-National FE I	-	-	✓	-	-
Sub-National FE II		-	-	✓	-
Sub-National FE III		-	-	-	✓
Observations	63415	57764	57764	57764	57764
Adjusted R^2	0.048	0.500	0.344	0.342	0.332
F	20.34	71.31	186.2	186.2	61.66

Clustered standard in parentheses

+ $p < 0.10$, * $p < 0.05$, ** $p < 0.01$, *** $p < 0.001$

TABLE 16. Historical Capitals and Development, 1% Discount Rate

	(1)	(2)	(3)	(4)	(5)
	log(Lights)	log(Lights)	log(Lights)	log(Lights)	log(Lights)
LHCE $\delta=1\%$	3.225*** (0.683)	1.079*** (0.300)	0.913*** (0.216)	0.882*** (0.172)	0.866*** (0.200)
Current Capital Distance		-0.0802** (0.0256)	-0.0106 (0.0176)	0.0131+ (0.00784)	0.0406*** (0.0119)
log(Population)		0.192*** (0.0215)	0.202*** (0.00490)	0.198*** (0.00468)	0.195*** (0.00814)
Absolute Latitude		-0.00110 (0.00381)	-0.307*** (0.0398)	-0.312*** (0.0414)	0.0167*** (0.00422)
Avg Precipitation		-0.0287 (0.0718)	-0.114*** (0.0212)	-0.0865*** (0.0194)	-0.113** (0.0343)
Avg Precipitation Squared		0.00109 (0.0119)	0.00804+ (0.00421)	0.00354 (0.00396)	0.00795 (0.00760)
Avg Temperature		0.00331 (0.00344)	0.00568*** (0.00128)	0.00644*** (0.00130)	0.00910*** (0.00221)
% Mountainous		-0.229*** (0.0403)	-0.168*** (0.0139)	-0.154*** (0.0142)	-0.186*** (0.0221)
Access to Water		0.0834*** (0.0165)	0.0754*** (0.00522)	0.0851*** (0.00606)	0.0774*** (0.00892)
Malaria Index		-0.0116** (0.00349)	-0.00109 (0.00121)	0.000264 (0.00106)	-0.00622*** (0.00186)
Oil and Gas		0.139*** (0.0302)	0.113*** (0.0186)	0.136*** (0.0201)	0.117*** (0.0202)
Soil Quality		-0.0501** (0.0182)	-0.0110** (0.00383)	-0.00757+ (0.00391)	-0.0215*** (0.00611)
Distance to Nearest City		0.205*** (0.0369)	0.0910** (0.0299)	0.132*** (0.0285)	0.0480 (0.0531)
Conflict		-0.540 (0.391)	-0.441* (0.223)	-1.307*** (0.144)	-1.075*** (0.214)
Constant	0.332*** (0.0163)	-0.870*** (0.139)	10.43*** (1.503)	10.55*** (1.565)	-1.831*** (0.185)
Country FE	✓	✓	-	-	-
Sub-National FE I	-	-	✓	-	-
Sub-National FE II	-	-	-	✓	-
Sub-National FE III	-	-	-	-	✓
Observations	63415	57764	57764	57764	57764
Adjusted R^2	0.052	0.501	0.345	0.342	0.332
F	22.31	71.27	186.6	186.5	61.82

Clustered standard in parentheses

+ $p < 0.10$, * $p < 0.05$, ** $p < 0.01$, *** $p < 0.001$

TABLE 17. Historical Capitals and Development, 10% Discount Rate

	(1)	(2)	(3)	(4)	(5)
	log(Lights)	log(Lights)	log(Lights)	log(Lights)	log(Lights)
LHCE $\delta=10\%$	9.012*** (1.445)	3.344*** (0.681)	2.953*** (0.365)	2.701*** (0.317)	2.590*** (0.453)
Current Capital Distance		-0.0767** (0.0261)	-0.00185 (0.0174)	0.0182* (0.00762)	0.0451*** (0.0118)
log(Population)		0.190*** (0.0218)	0.201*** (0.00485)	0.196*** (0.00464)	0.193*** (0.00813)
Absolute Latitude		-0.00110 (0.00383)	-0.307*** (0.0397)	-0.311*** (0.0412)	0.0164*** (0.00420)
Avg Precipitation		-0.0275 (0.0713)	-0.108*** (0.0210)	-0.0821*** (0.0193)	-0.114*** (0.0344)
Avg Precipitation Squared		0.000624 (0.0116)	0.00705+ (0.00411)	0.00293 (0.00393)	0.00838 (0.00760)
Avg Temperature		0.00362 (0.00348)	0.00587*** (0.00127)	0.00654*** (0.00130)	0.00923*** (0.00223)
% Mountainous		-0.227*** (0.0401)	-0.167*** (0.0139)	-0.154*** (0.0142)	-0.186*** (0.0222)
Access to Water		0.0825*** (0.0164)	0.0752*** (0.00521)	0.0844*** (0.00606)	0.0769*** (0.00892)
Malaria Index		-0.0115** (0.00352)	-0.000633 (0.00119)	0.000601 (0.00105)	-0.00616*** (0.00185)
Oil and Gas		0.138*** (0.0301)	0.112*** (0.0187)	0.134*** (0.0201)	0.115*** (0.0204)
Soil Quality		-0.0495** (0.0183)	-0.0105** (0.00381)	-0.00701+ (0.00390)	-0.0212*** (0.00609)
Distance to Nearest City		0.201*** (0.0365)	0.0853** (0.0299)	0.130*** (0.0283)	0.0481 (0.0530)
Conflict		-0.627 (0.382)	-0.469* (0.221)	-1.303*** (0.144)	-1.069*** (0.215)
Constant	0.315*** (0.0151)	-0.869*** (0.139)	10.43*** (1.499)	10.54*** (1.556)	-1.824*** (0.184)
Country FE	✓	✓	-	-	-
Sub-National FE I	-	-	✓	-	-
Sub-National FE II	-	-	-	✓	-
Sub-National FE III	-	-	-	-	✓
Observations	63415	57764	57764	57764	57764
Adjusted R^2	0.072	0.505	0.349	0.346	0.336
F	38.92	76.98	192.2	189.8	63.04

Clustered standard in parentheses

+ $p < 0.10$, * $p < 0.05$, ** $p < 0.01$, *** $p < 0.001$

TABLE 18. Historical Capitals and Development, 50% Discount Rate

	(1)	(2)	(3)	(4)	(5)
	log(Lights)	log(Lights)	log(Lights)	log(Lights)	log(Lights)
LHCE $\delta=50\%$	25.59*** (4.040)	10.19*** (1.744)	9.310*** (1.324)	8.947*** (1.066)	8.681*** (1.281)
Current Capital Distance		-0.0766** (0.0254)	0.00169 (0.0176)	0.0208** (0.00765)	0.0481*** (0.0117)
log(Population)		0.189*** (0.0216)	0.200*** (0.00487)	0.195*** (0.00465)	0.192*** (0.00814)
Absolute Latitude		-0.000924 (0.00383)	-0.307*** (0.0394)	-0.311*** (0.0410)	0.0166*** (0.00416)
Avg Precipitation		-0.0354 (0.0715)	-0.112*** (0.0209)	-0.0836*** (0.0192)	-0.116*** (0.0339)
Avg Precipitation Squared		0.00159 (0.0116)	0.00753+ (0.00409)	0.00307 (0.00389)	0.00859 (0.00755)
Avg Temperature		0.00417 (0.00353)	0.00597*** (0.00128)	0.00668*** (0.00132)	0.00947*** (0.00224)
% Mountainous		-0.226*** (0.0403)	-0.169*** (0.0139)	-0.154*** (0.0141)	-0.185*** (0.0222)
Access to Water		0.0828*** (0.0166)	0.0756*** (0.00522)	0.0849*** (0.00610)	0.0767*** (0.00893)
Malaria Index		-0.0115** (0.00354)	-0.000218 (0.00120)	0.000722 (0.00105)	-0.00603** (0.00184)
Oil and Gas		0.141*** (0.0302)	0.115*** (0.0187)	0.137*** (0.0201)	0.117*** (0.0205)
Soil Quality		-0.0491** (0.0182)	-0.0105** (0.00379)	-0.00677+ (0.00389)	-0.0211*** (0.00608)
Distance to Nearest City		0.201*** (0.0360)	0.0853** (0.0299)	0.127*** (0.0282)	0.0484 (0.0528)
Conflict		-0.645+ (0.386)	-0.458* (0.220)	-1.275*** (0.141)	-1.037*** (0.212)
Constant	0.332*** (0.0121)	-0.871*** (0.137)	10.42*** (1.489)	10.52*** (1.549)	-1.830*** (0.182)
Country FE	✓	✓	-	-	-
Sub-National FE I	-	-	✓	-	-
Sub-National FE II	-	-	-	✓	-
Sub-National FE III	-	-	-	-	✓
Observations	63415	57764	57764	57764	57764
Adjusted R^2	0.070	0.505	0.351	0.349	0.339
F	40.13	86.08	191.7	191.3	67.17

Clustered standard in parentheses

+ $p < 0.10$, * $p < 0.05$, ** $p < 0.01$, *** $p < 0.001$

12. GLOBAL DATA, JACKKNIFE

TABLE 19. Historical Capitals and Development, Jackknife

	(1) log(Lights)
LHCE $\delta=5\%$	2.038*** (0.538)
Current Capital Distance	-0.0782* (0.0370)
log(Population)	0.191*** (0.0253)
Absolute Latitude	-0.00112 (0.00559)
Avg Precipitation	-0.0272 (0.0798)
Avg Precipitation Squared	0.000723 (0.0137)
Avg Temperature	0.00343 (0.00429)
% Mountainous	-0.228*** (0.0509)
Access to Water	0.0829*** (0.0177)
Malaria Index	-0.0115** (0.00420)
Oil and Gas	0.138*** (0.0316)
Soil Quality	-0.0498* (0.0232)
Distance to Nearest City	0.203*** (0.0429)
Conflict	-0.583 (0.455)
Constant	-0.869*** (0.258)
Country FE	✓
Observations	57764
Adjusted R^2	0.503
F	76.50

Clustered standard in parentheses

+ $p < 0.10$, * $p < 0.05$, ** $p < 0.01$, *** $p < 0.001$

13. GLOBAL DATA, SPATIAL AUTOCORRELATION

TABLE 20. Historical Capitals and Development, Spatial Autocorrelation

	(1) log(Lights)
LHCE $\delta=5\%$	3.175*** (0.392)
Current Capital Distance	-0.0506*** (0.00701)
log(Population)	0.126*** (0.00341)
Absolute Latitude	-0.00336*** (0.000547)
Avg Precipitation	0.0666* (0.0305)
Avg Precipitation Squared	-0.0348*** (0.0100)
Avg Temperature	-0.0154*** (0.00107)
% Mountainous	-0.443*** (0.0220)
Access to Water	0.172*** (0.00944)
Malaria Index	-0.0333*** (0.00123)
Oil and Gas	0.266*** (0.0279)
Soil Quality	-0.0430*** (0.00558)
Distance to Nearest City	-0.0525*** (0.0153)
Conflict	-1.585*** (0.173)
Country FE	✓
Observations	57764
Adjusted R^2	0.583
F	

Clustered standard in parentheses

+ $p < 0.10$, * $p < 0.05$, ** $p < 0.01$, *** $p < 0.001$

14. GLOBAL DATA WITHOUT EURATLAS SAMPLE

TABLE 21. Historical Capitals and Development, Without Euratlas Sample

	(1)	(2)	(3)	(4)	(5)
	log(Lights)	log(Lights)	log(Lights)	log(Lights)	log(Lights)
LHCE $\delta=5\%$	6.697*** (1.698)	2.305** (0.783)	2.073*** (0.607)	1.920*** (0.445)	2.219*** (0.566)
Current Capital Distance		-0.0847** (0.0312)	-0.00816 (0.0179)	0.0159* (0.00783)	0.0422*** (0.0119)
log(Population)		0.184*** (0.0246)	0.194*** (0.00508)	0.187*** (0.00475)	0.184*** (0.00855)
Absolute Latitude		-0.00242 (0.00402)	-0.302*** (0.0365)	-0.305*** (0.0363)	0.0132** (0.00414)
Avg Precipitation		-0.0317 (0.0687)	-0.0982*** (0.0214)	-0.0816*** (0.0191)	-0.101** (0.0341)
Avg Precipitation Squared		0.000721 (0.0107)	0.00524 (0.00403)	0.00266 (0.00389)	0.00639 (0.00736)
Avg Temperature		0.00382 (0.00317)	0.00341** (0.00129)	0.00438*** (0.00133)	0.00725** (0.00227)
% Mountainous		-0.224*** (0.0434)	-0.176*** (0.0144)	-0.171*** (0.0146)	-0.184*** (0.0236)
Access to Water		0.0617*** (0.0137)	0.0565*** (0.00486)	0.0626*** (0.00537)	0.0604*** (0.00782)
Malaria Index		-0.0104** (0.00351)	-0.000915 (0.00117)	0.000133 (0.00106)	-0.00615*** (0.00181)
Oil and Gas		0.135*** (0.0348)	0.108*** (0.0218)	0.130*** (0.0235)	0.115*** (0.0239)
Soil Quality		-0.0480* (0.0190)	-0.00894* (0.00390)	-0.00482 (0.00398)	-0.0175** (0.00645)
Distance to Nearest City		0.205*** (0.0411)	0.136*** (0.0291)	0.158*** (0.0272)	0.104* (0.0517)
Conflict		-0.900* (0.405)	-0.671** (0.228)	-1.462*** (0.146)	-1.297*** (0.228)
Constant	0.247*** (0.0205)	-0.768*** (0.157)	10.17*** (1.363)	10.23*** (1.357)	-1.672*** (0.182)
Country FE	✓	✓	-	-	-
Sub-National FE I	-	-	✓	-	-
Sub-National FE II		-	-	✓	-
Sub-National FE III		-	-	-	✓
Observations	51173	51173	51173	51173	51173
Adjusted R^2	0.051	0.499	0.346	0.344	0.327
F	15.55	80.59	149.5	156.5	48.49

Clustered standard errors in parentheses

+ $p < 0.10$, * $p < 0.05$, ** $p < 0.01$, *** $p < 0.001$